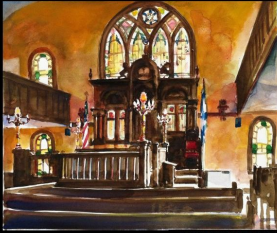




THE MAINE JEWISH MUSEUM

Celebrating Jewish Art, History, and Culture in Maine

THE MAINE JEWISH MUSEUM



Celebrating
Jewish Art, History, and Culture
in Maine

Maine Jewish Museum
267 Congress St.
Portland ME 04101
207-773-2339
mainejewishmuseum.org

Hours: M-F 10:00-4:00
Often later, call ahead.
OPEN SUNDAYS
12:00 - 4:00 PM

Gary Barron
Executive Director

Nancy Davidson
Curator in Residence
nancyd.mj@gmail.com
207-239-4774

BOARD OF DIRECTORS

EXECUTIVE COMMITTEE

Steven Brinn
President

Aaron Shapiro
Vice President

Andrew Brenner

The Maine Jewish Museum began exhibiting Jewish Artists with a Maine connection in 2013. For the past seven years we have provided to our community over 80 exhibitions. We began with one exhibition every three months and now we provide three exhibitions every two months. As the Museum remains closed during this time of social distancing, we would like to share some memories of the wonderful exhibitions.

We have chosen 3 exhibits from each year to highlight and jog your memory during these stay at home times.

Enjoy!

Nancy Davidson, Curator In Residence

Nanci Kahn, Curator of Photography

Please enjoy this sampling from our 2013 Exhibitions

Treasurer

Ivan Howard
Secretary

Rabbi Gary Berenson
Founding Executive
Director

Jody Sataloff
Founding President

**BOARD OF
DIRECTORS AT
LARGE**

Nancy Osher Blumberg
Harris Gleckman
Lee Goldberg
Barry Hoffman
Judy Glickman Lauder
Ruthie Noble
Abe Peck
Janet Raffel
Amy Tinkle
Nancy Ziegler

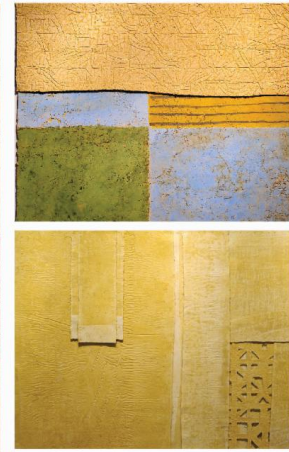
Asherah Cinnamon

Asherah Cinnamon's public art explores the power of human interaction to build community, seek justice (tzedek), and heal the world (tikkun olam).



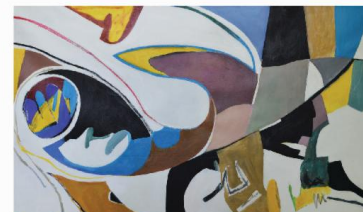
George Mason

"I create conditions/ experiments that I then follow with great curiosity. This appears to involve 'listening' and following the thread of what is observed. The materials I experiment with include plaster, clay, burlap, pigment, casein paint, and encaustic. Light, shadow, texture and relief, and the primacy of gravity continue to capture my attention."



Harold Garde

Harold Garde's major bodies of work in painting, drawing, and prints reveal his early and vigorous engagement with Abstract Expressionism as well as the persistent innovation of his mature artistic experimentation.



Maine Jewish Museum

The mission of the Maine Jewish Museum is to honor the contributions and diversity of Maine's Jewish immigrants in the context of the American experience. Through exhibits and programming, the Museum seeks to build bridges of appreciation and understanding with people of all backgrounds.

Join us in celebrating Jewish ART, HISTORY and CULTURE in Maine.

Maine Jewish Museum, 267 Congress St, Portland, ME 04101

[SafeUnsubscribe™ gleckman@mindspring.com](#)

[Forward this email](#) | [Update Profile](#) | [About our service provider](#)

Sent by execd@mainejewishmuseum.org in collaboration with

